

Notes:
 Do not scale from this drawing.
 All dimensions are in millimetres unless otherwise noted.
 All dimensions to be checked on site before proceeding with work.
 All omissions and discrepancies to be reported in writing to Project 3 Architects Ltd.
 Areas indicated on this drawing are approximate and indicative only.
 © Project 3 Architects Limited Registered in England & Wales Number 08021795.

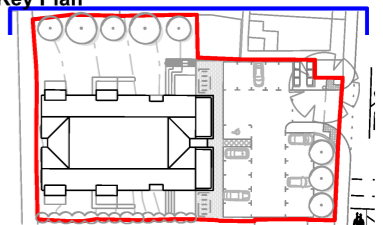
Legend

- - - dashed line indicates extent of original house (now demolished)

Material Key

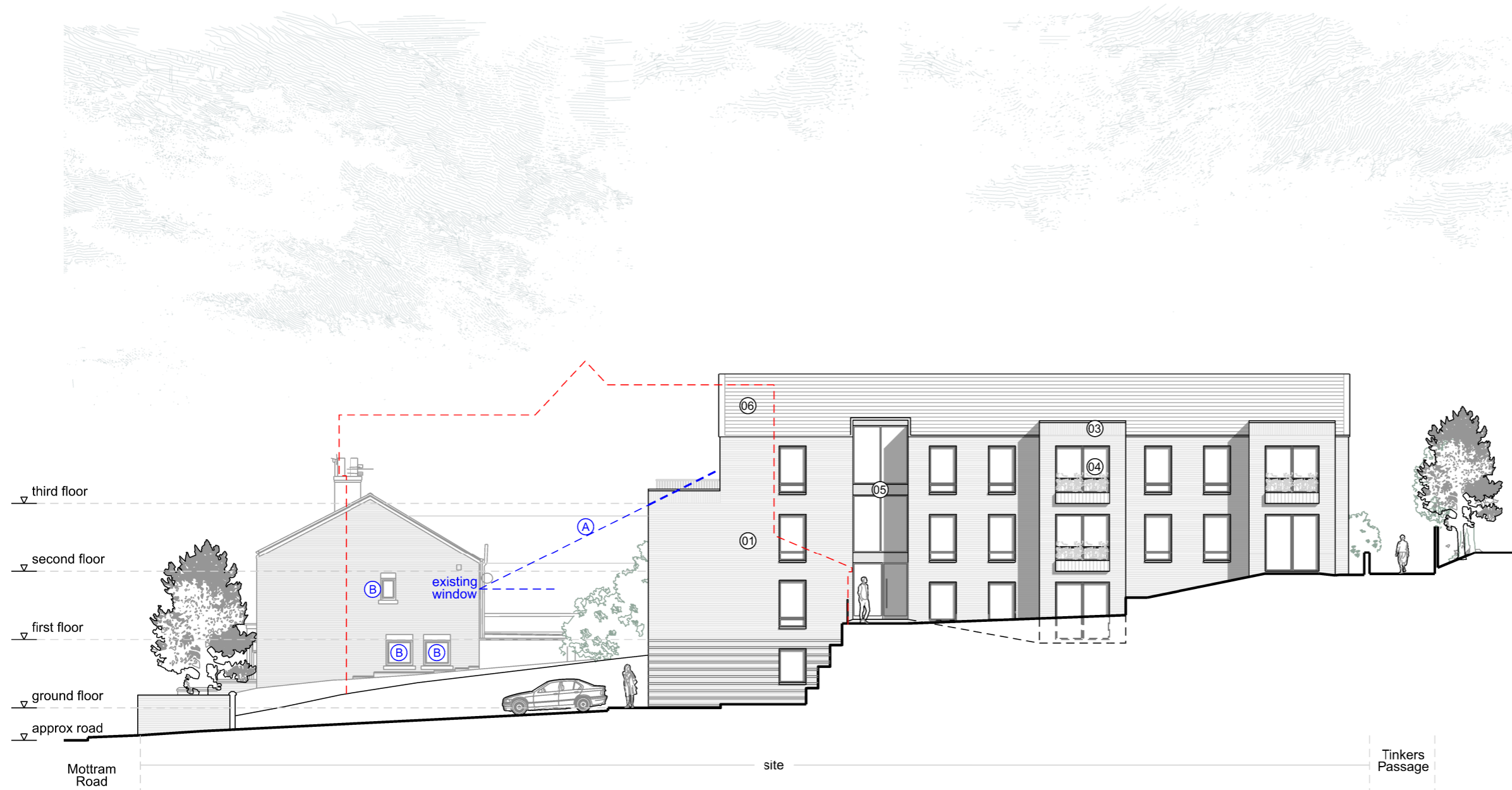
- ① Brickwork
- ② Recessed brickwork detail
- ③ Brickwork soldier course
- ④ Aluminum windows
- ⑤ Cladding Panel
- ⑥ Grey roof tile
- ⑦ Opaque Glazing

Key Plan



Notes

- Ⓐ line of sight obscured by parapet roof
- Ⓑ opaque glazed windows as existing



P02	21/07/22	Privacy Distances Added	ED
P01	21/03/22	Planning	ED
Rev:	Date:	Description:	By:



PROJECT 3
architects

4 back grafton street
 altrincham
 cheshire
 WA14 1DY
 0161 233 0575
 mail@project3architects.com
 www.project3architects.com

Project:
 Mottram Road, Hyde

Title:
 Proposed Site Elevation 04

Status: **PLANNING** Scale @ ISO A3: 1:200
 Drawing Number: 0596-P3A-XX-XX-DR-A-05204 Revision: P02